



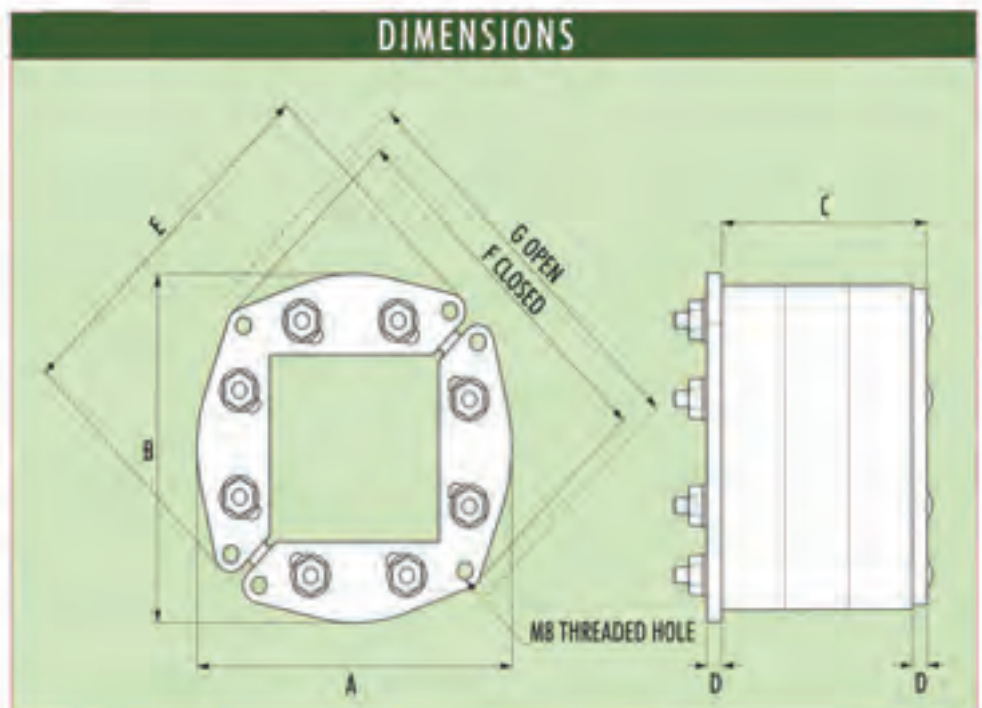
Round Transit Frames

The system has been designed by Hawke to effectively seal cables and pipes passing through circular apertures, providing a barrier and pressure seal against fire, water and gas, etc. The seal is formed by tightening the compression bolts which expand the system radially. Easily installed without the need for specialised personnel.

Requires no special frame or tools for installation.

Integral extraction facility enables cabling to be modified

The system is designated by the letters HRT (or HRTO for the open versions). The compression plates are also available in stainless steel.

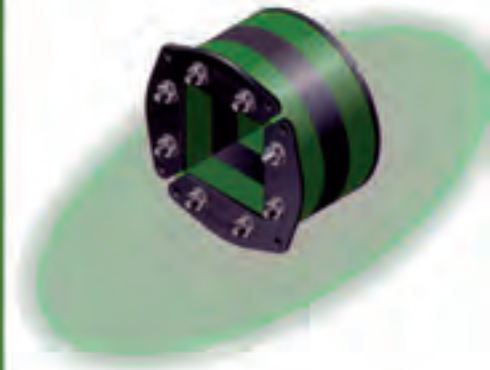


TEMP FRAME SIZES



Hawke

Round Transit System



Hawke Round Transit Frames

- Certified for both Civil and Marine applications
- May be used to seal existing cable and pipes
- HRTO – open version available in all sizes for applications where cables/pipes are already in position
- Easily installed without the need for specialised personnel
- Requires no special frame or tools for installation
- Integral extraction facility enables cabling to be modified

FRAME DIMENSIONS

CODE	BOLT SIZE	A	B	C	D	E	F	G
		MM	MM	MM	MM	MM	MM	MM
HRT 30	4xM5x70	32	32	64	4	32	-	-
HRT 40	4xM5x70	40	40	64	4	40	-	-
HRT 50	4xM5x70	50	50	64	4	50	-	-
HRT 70	4xM6x85	85	85	70	4	94	96	105
HRT 100	4xM6x85	108	108	70	4	124	126	137
HRT 150	8xM8x90	160	160	74	5	176	176	187
HRT 200	8xM8x90	210	210	74	5	226	226	237

HRT APPLICATION DATA

CODE	WEIGHT		NOMINAL	PIPE RANGE		CABLE INSTALLATION AREA
	STEEL	STAINLESS STEEL		STANDARD HRT FRAME	OPEN HRTO FRAME	
	KGS	KGS		MM	MM	
HRT 30	0.11	0.12	31	31-33	31-32	15x15
HRT 40	0.15	0.16	39	39-40	39-40	20x20
HRT 50	0.18	0.19	49	49-52	49-50	30x30
HRT 70	0.5	0.7	69	69-72	69-70	40x40
HRT 100	0.80	0.85	99	99-102	99-100	60x60
HRT 150	1.9	2.2	149	149-153	149-150	90x90
HRT 200	3.7	3.7	199	199-203	199-200	120x120