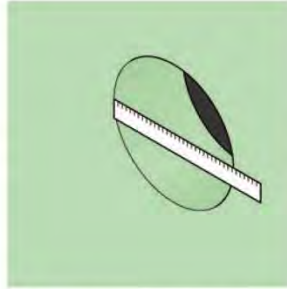


Round Transit System

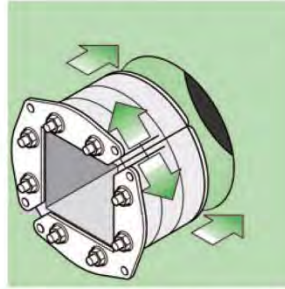
The following diagrams explain step by step how easy it is to install Hawke cable/pipe tolerant blocks into Round Transit frames.



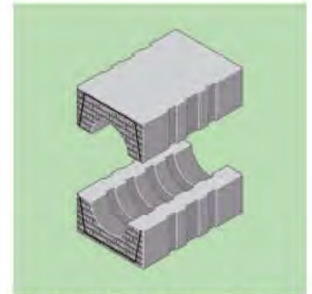
1 Draw up a Hawke Design Template to determine your cable/pipe layout.



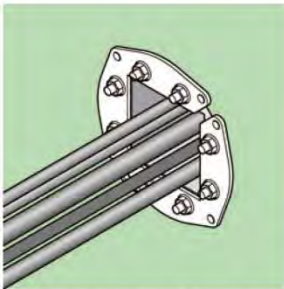
2 Measure the inside of pipe or aperture to ensure that it is within the tolerance of the Round Transit Frame to be used.



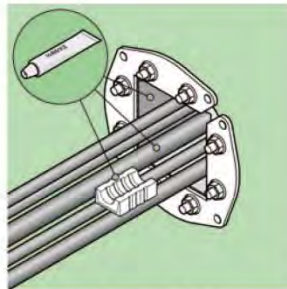
3 Insert the Round Transit Frame and open the two front plate*. No lubricant should be applied to the aperture or outside of the frame



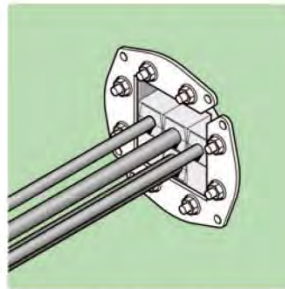
Hawke Cable/Pipe Tolerant Blocks
Hawke's unique inspectable colour coded blocks ensure that the top and bottom half of each block has been correctly matched for size.



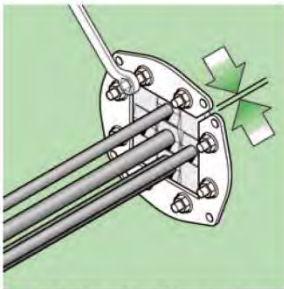
4 Pull the cables or pipes through the frame. (Note: Use open ended Round Transit to fit around existing cables/pipes).



5 Lubricate the inside of the frame and each of the insert blocks.



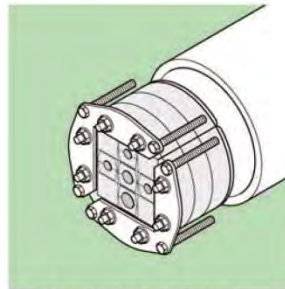
6 Begin packing the transit frame starting at the bottom and finishing at the top. Ensure that the blocks are pushed firmly against the rear retaining lip.



7 Slide the two front plates together and tighten the nuts 2mm each time, applying equal pressure to both plates*. The bolts should be tightened until the cables/pipes are sealed. A minimum of 10mm of thread should protrude on each bolt.



8 Hawke's unique colour coding system enables the installation to be visually inspected after completion and ensures the correct matching of the block halves.



9 EXTRACTION OF SYSTEM
Extraction is achieved by releasing the compression, i.e. by reversing steps 5 and 6 and screwing M8 bolts(not supplied) into the threaded holes at each corner of the front plates. This releases the assembly from the aperture and allows the system to be disassembled.

Note:

HRT30, HRT40 and HRT50 front plates are fixed